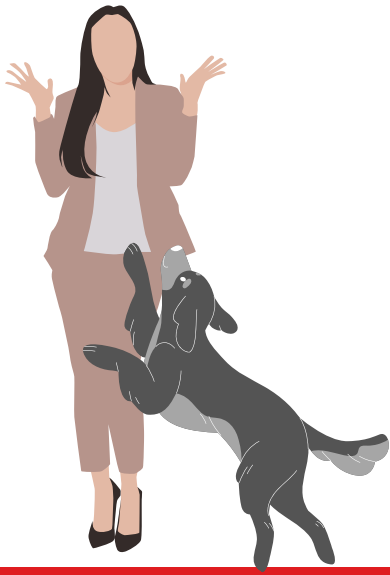


# ACTIVE DISENGAGEMENT

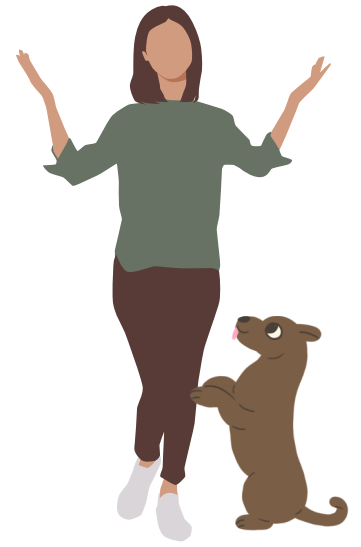
How YOU react determines how long these behaviors continue. Try these solutions the **MOMENT** these behaviors begin.



JUMPING?



MOUTHING?



PAWING?

## Do This In Response



Stiffen your body  
Put your arms to  
your side

Do not look at,  
touch or talk to your  
dog



Walk away

Do not look at,  
touch or talk to  
your dog

Leave the room for  
20 - 30 seconds if  
your dog tries to  
continue

## Tips & Hints

- Repeat disengagement the **MOMENT** the nipping, pawing, jumping starts again
- Good things happen when your dog makes better choices. Make sure to reward the good.**
- Everyone in the family should be using the same cues / reactions for the behavior
- Screaming, squealing and quick movements will encourage the behavior you do not want**

**ALWAYS** re-engage with your dog when their behavior has improved. Use calm praise and affection.

